

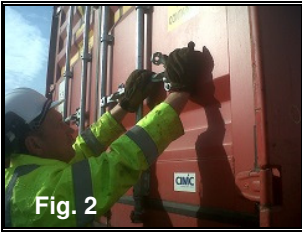
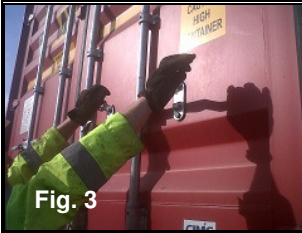
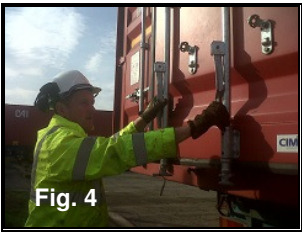
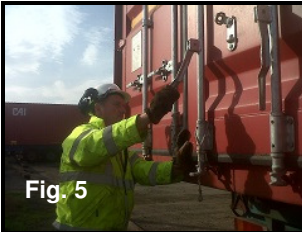
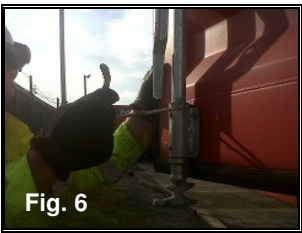


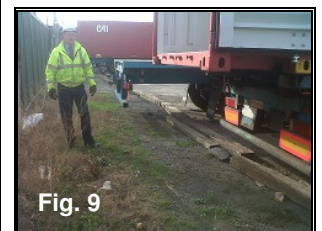
Revision	Date	Reviewed By	Authorised By
V1	21/07/2017	C Reynolds	P FitzPatrick
Review Date	22/06/2018	Change Details	No change
Task	Container operation		
Scope	<ul style="list-style-type: none"> • Opening rear doors • Entering back of container • Anchor points • Operating twist locks 		
Tools & Equipment Required	<ul style="list-style-type: none"> ○ See TAT – SWP 001 		
Persons Involved	Driver		
Supervisor for the Task	Loading Site Supervisor		
Hazards	Trips, Slips, Falls from height, Manual handling, Trapping		
REPORTING PROCEDURE			
<p>Whilst carrying out the task as instructed within this Safe Working Procedure, if one or more of the controlled steps cannot be undertaken, the following instruction must be followed: -</p> <ol style="list-style-type: none"> 1. STOP the task 2. If possible without further risk, make the area safe 3. Report to your team leader or section manager immediately for guidance <p>Only trained and authorised personnel can carry out these tasks.</p>			
Personal Protective Equipment			
			
The above Personal Protection Equipment should be worn prior to entering the loading site			
General Safety			
<p>It is the duty of all employees to comply with the following Safe Working Procedure designed to provide a code of good practice and conduct with the objective of preventing accidents or harm. At all times employees must work in a safe manner both to prevent personal injury to themselves or others.</p>			



Pre start Safety Check	
<p>Before any container operation, you should consider the following points, to identify:-</p> <ul style="list-style-type: none">• If you have sufficient space in which to work• If the area you will be looking in is free from slip and trip hazards• If there are any pedestrians moving around in the area you will be operating• If there are any vehicles moving around in the area you will be operating• That you are wearing minimum Personal Protection Equipment (Helmet and chin strap; high visibility vest; safety shoes; gloves and safety glasses where necessary)• If the weather will allow the operation to be performed safely• If there is sufficient lighting to perform tasks safely	

Container Operation	
<ul style="list-style-type: none"> • Container ready for loading or unloading - Fig. 1 	 <p>Fig. 1</p>
<ul style="list-style-type: none"> • Wearing full PPE, including hard hat, half open the latches on right hand door first. - Fig. 2 and 3 	 <p>Fig. 2</p>
<ul style="list-style-type: none"> • Keep one hand on door and feel if there is any unusual heavy pressure resting on the door. If unsure, then do not proceed, close the latches and seek assistance. STAY FULLY AWARE OF HIGH RISK OF PRODUCT FALLING OUT OF BACK DOORS 	 <p>Fig. 3</p>
<ul style="list-style-type: none"> • If no unusual pressure is felt on the doors, proceed to open the latches. Standing to the side, slowly open the door slightly and do visual check to see if any product resting on the doors. – Fig. 4 and 5. AGAIN, STAY FULLY AWARE OF HIGH RISK OF PRODUCT FALLING OUT OF BACK DOORS 	 <p>Fig. 4</p>
<ul style="list-style-type: none"> • Once check has been done to ensure no potential for falling cargo, open and secure both doors. – Fig. 6 and 7 	 <p>Fig. 5</p>
<ul style="list-style-type: none"> • Once check has been done to ensure no potential for falling cargo, open and secure both doors. – Fig. 6 and 7 	 <p>Fig. 6</p>

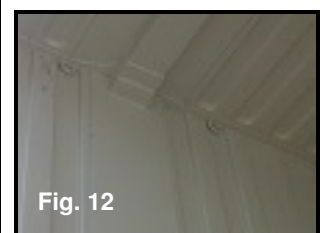
- Containers are very high and do not have steps attached so therefore do not attempt to climb into the back of a container – Fig. 8 and 9.



- Use mobile steps provided by site to access container if not loading from a loading dock, example of mobile steps. – Fig.10.



- Anchor points in containers are fixed into the container. Take care when reaching to use upper anchor points, ask site to provide mobile steps if unable to reach safely. – Fig. 11 and 12



- Twist lock operation – ensure Safety gloves are worn. Twist handle to right to lock.
- Handle in locked position. – Fig. 13

- Handle in unlocked position. – Fig. 14

- Lock in place. – Fig. 15

- Lock released. – Fig. 16

